



FORK MEASURING COMPANY  
Vavdi Sr.No. 17, Plot No 55B, Rani Industrial Estate  
Gondal Road, Rajkot-360002

**INSTRUCTION MANUAL FOR DIGITAL READOUT**

---

# OPERATION MANUAL

# FORK DIGITAL READOUT



FORK MEASURING COMPANY  
Vavdi Sr.No. 17, Plot No 55B, Rani Industrial Estate  
Gondal Road, Rajkot-360002

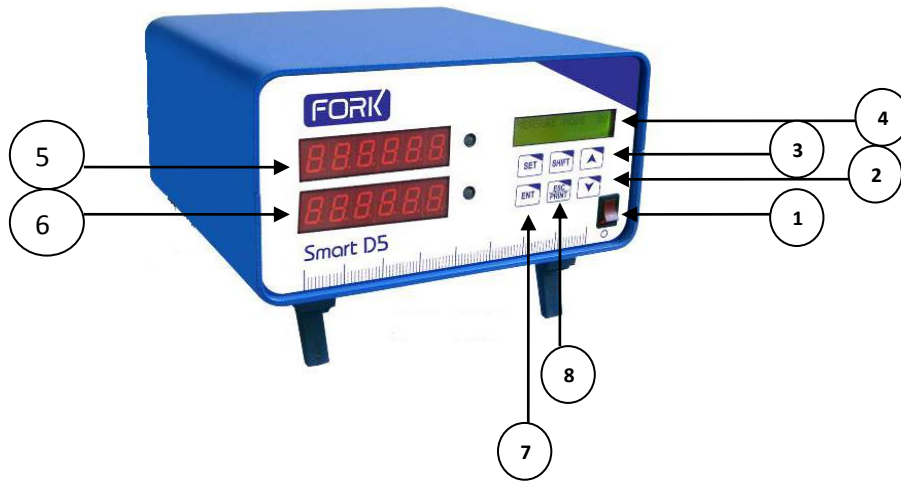
## INSTRUCTION MANUAL FOR DIGITAL READOUT

---

### ➤ ENVIRONMENT, MAINS POWER SUPPLY & OTHER STATUTORY REQUIREMENTS

1. Read the Operating Instructions prior to use.
2. Power consumed by the read-out is 10 VA (max)
3. Voltage supply to the read-out should be 220-v ac  $\pm 10\%$ , 50 Hz. This being a very sensitive measuring equipment, hence to ensure consistent and error-free operation, the user is advised to provide Mains AC voltage supply that is free of instability as well as surges and spikes in any form. In case the Mains power supply is not stable, then use of a reliable and fast acting stabilizer (like a CVT) is recommended. Further, there should not be machines connected on the same supply line that cause sparking or high powered inductive switching.
4. In order to obtain optimum regulation, it is advised that the amount of power consumed by the Readout should be considered when selecting a good quality Mains voltage stabilizer.
5. The Ground (Earth) terminal connections that will provide to this system should be local, functional, and isolated from that which is provided to any other high-powered machine tool.
6. Ensure that the LIVE terminal is the Right Hand Side pin, and the NEUTRAL terminal is the Left-Hand Side pin of the User's AC Mains supply socket.
7. The AC voltage between the Neutral & Ground terminal should never exceed 1 volt AC.
8. Operating temperature range: 0°C to 50°C Humidity should not exceed 60 % RH (no condensing).
9. The measuring channels of the FORK readout are compatible only to FORK make probes.
10. Probe clamping details: Clamp the probe 25 mm above the top edge of the Rubber boot (bellow) using a slit bush. Refrain from using excessive clamping torque, which could permanently damage the probe.
11. Do not handle the probe with the cable.
12. Ensure that the probes threaded anvil (tip), and Pre-travel control (located at the top end – near the cable exit), are adequately tightened.
13. Prior to use, the User is advised to calibrate the readout unit – along with the probe that will be used with it. Thereafter, the gauging system – comprising of the Probe & Readout, should be subject to periodic Calibration.
14. No dust or fluids should be allowed to ingress into the Readout or Probe enclosure.

## INSTRUCTION MANUAL FOR DIGITAL READOUT

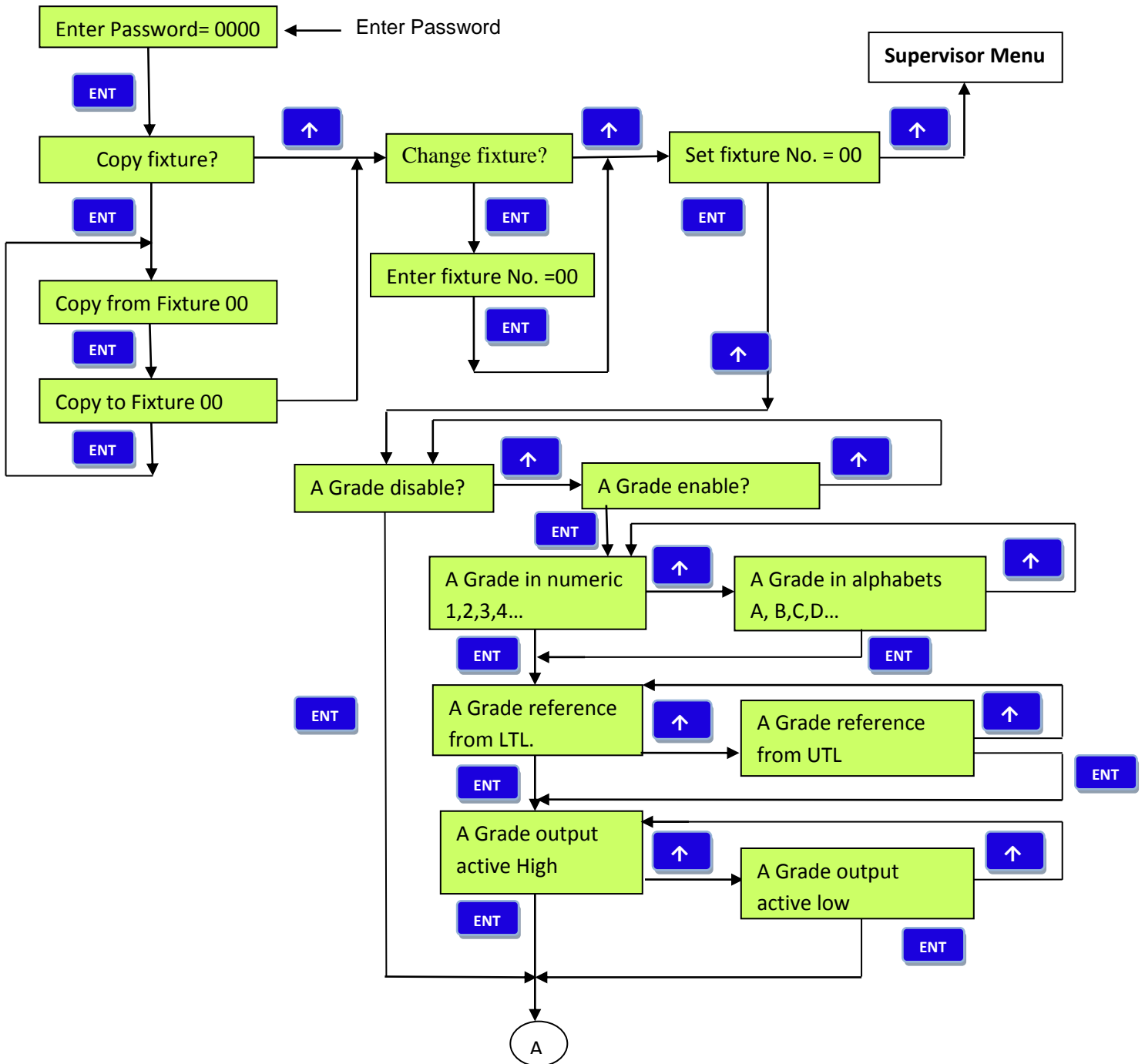


- 1- Power Switch
- 2- Lower Arrow
- 3- Upper Arrow
- 4- Menu Alphanumeric Display
- 5 & 6- Measurement Display
- 7- Enter key
- 8- Esc/Print key

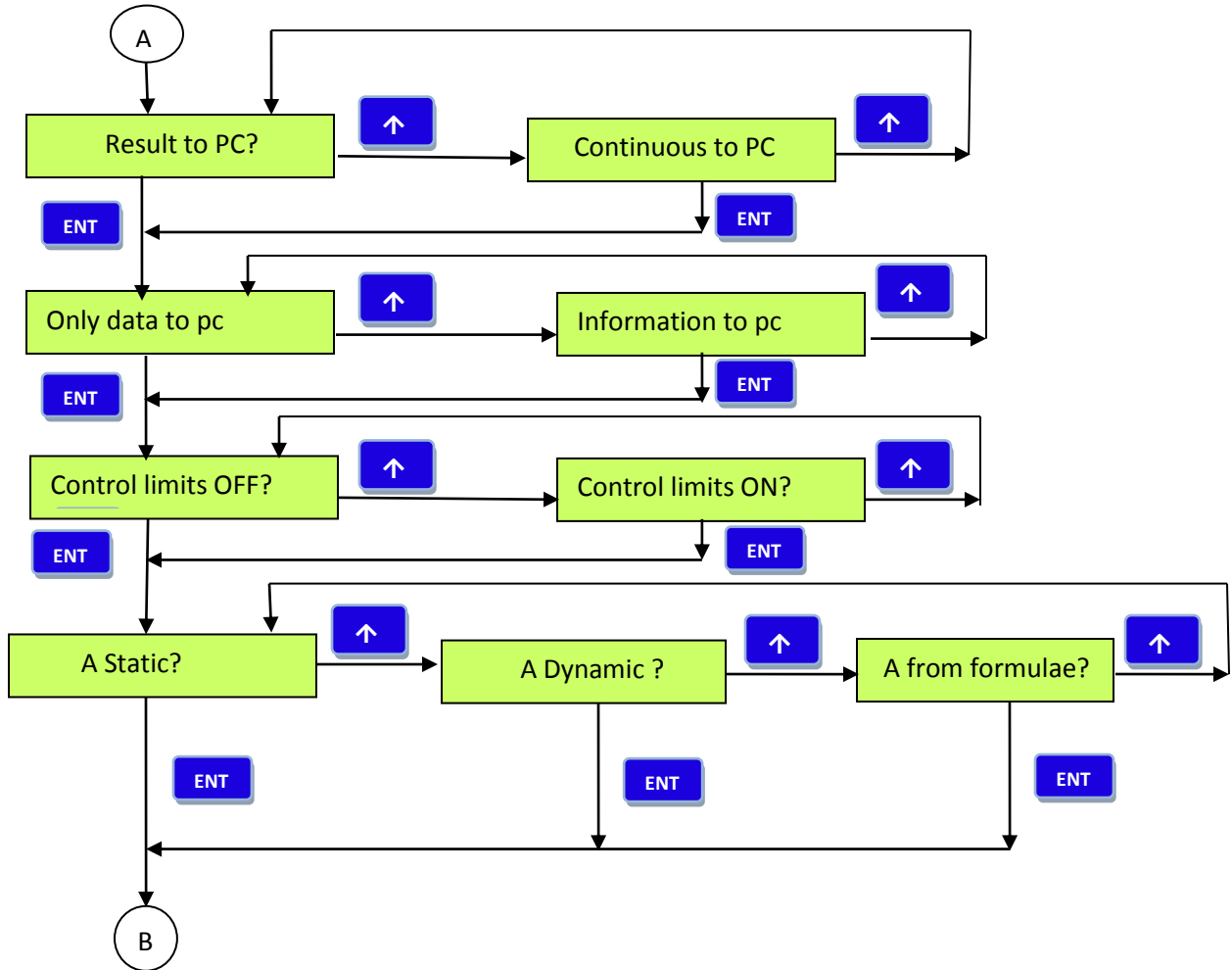
## INSTRUCTION MANUAL FOR DIGITAL READOUT

### ➤ SETTING PROCEDURES

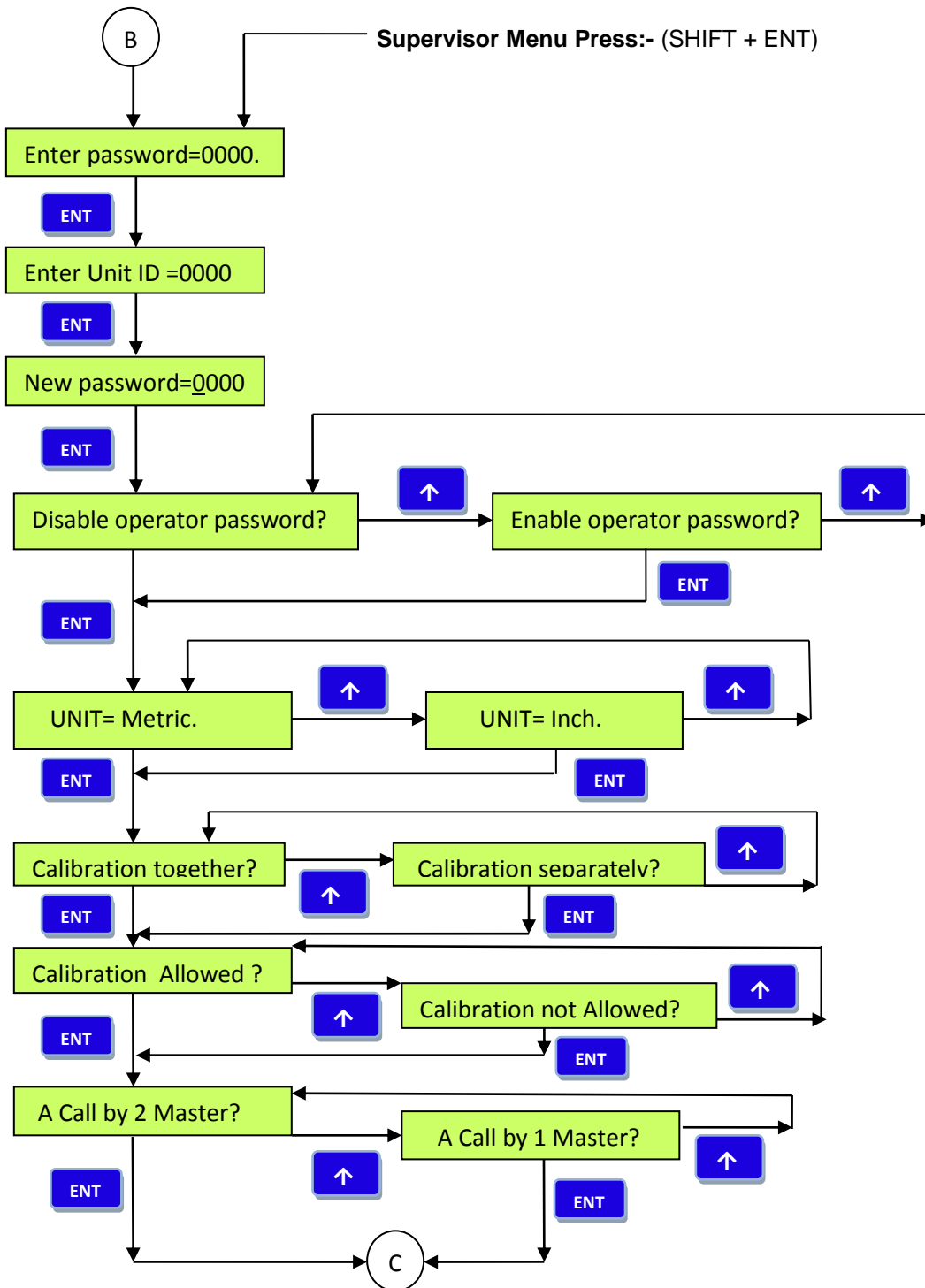
**For Factory Setting Press:- (SHIFT + ENT + ESC/PRINT)**



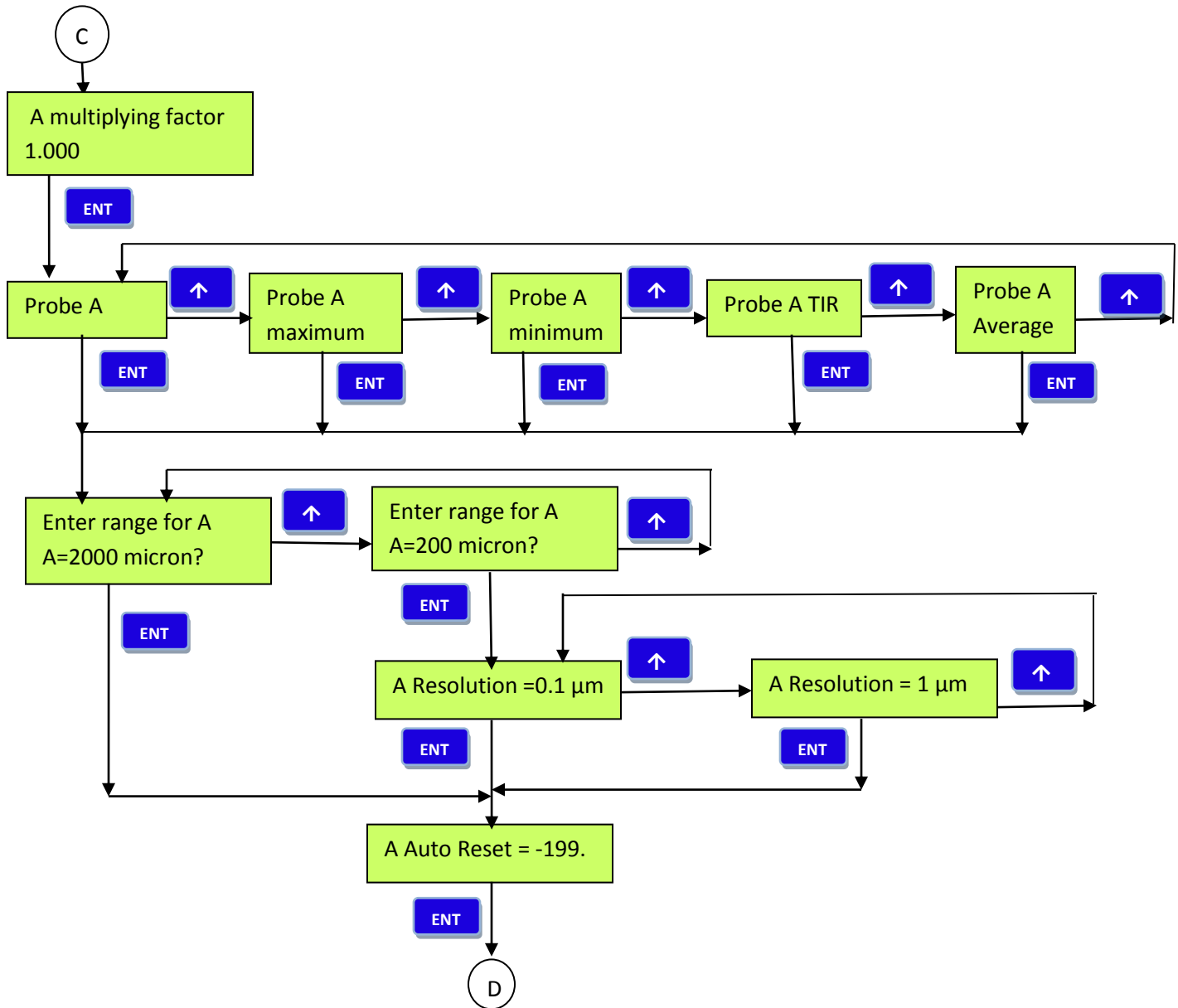
## INSTRUCTION MANUAL FOR DIGITAL READOUT



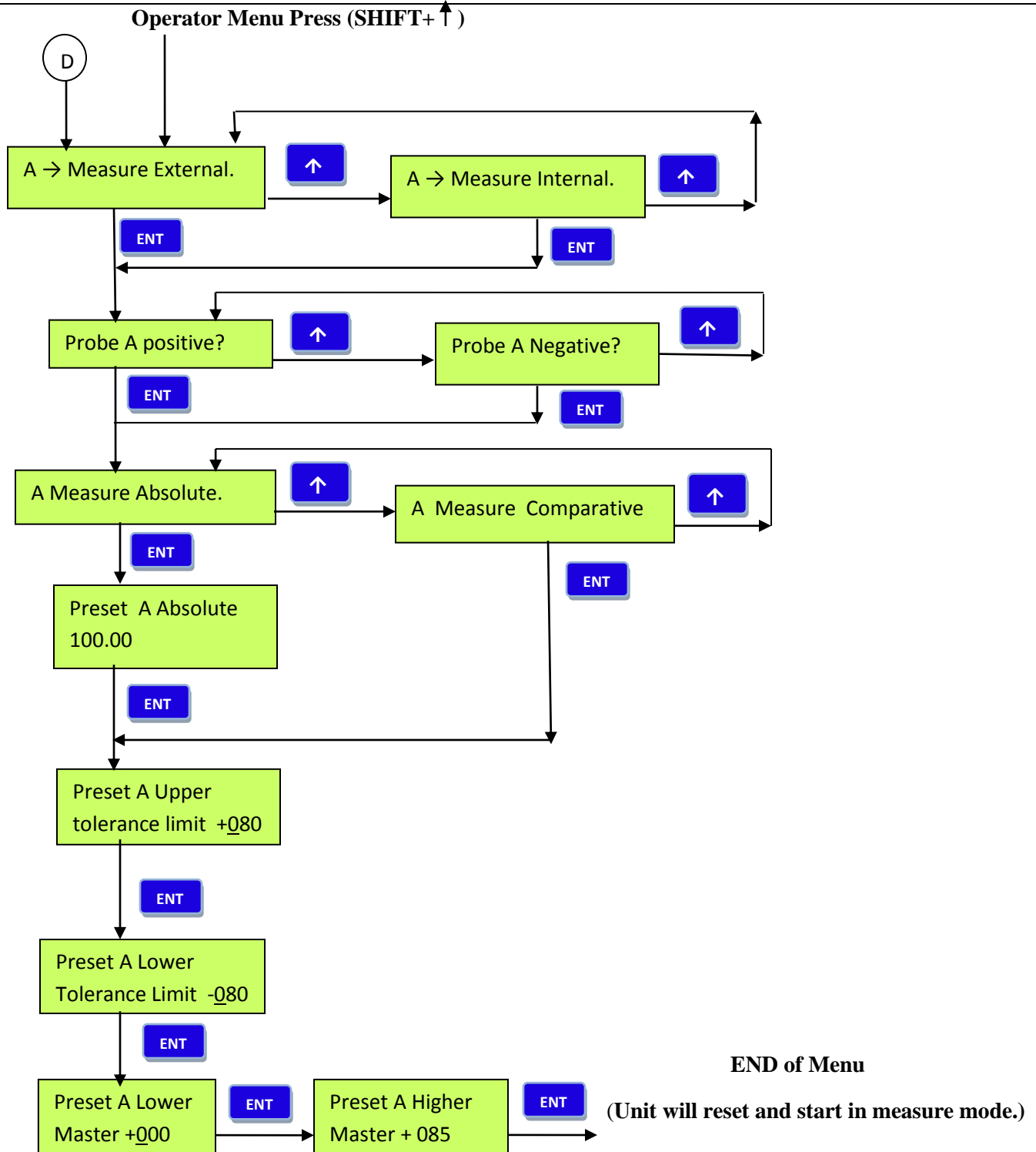
## INSTRUCTION MANUAL FOR DIGITAL READOUT



## INSTRUCTION MANUAL FOR DIGITAL READOUT



## INSTRUCTION MANUAL FOR DIGITAL READOUT



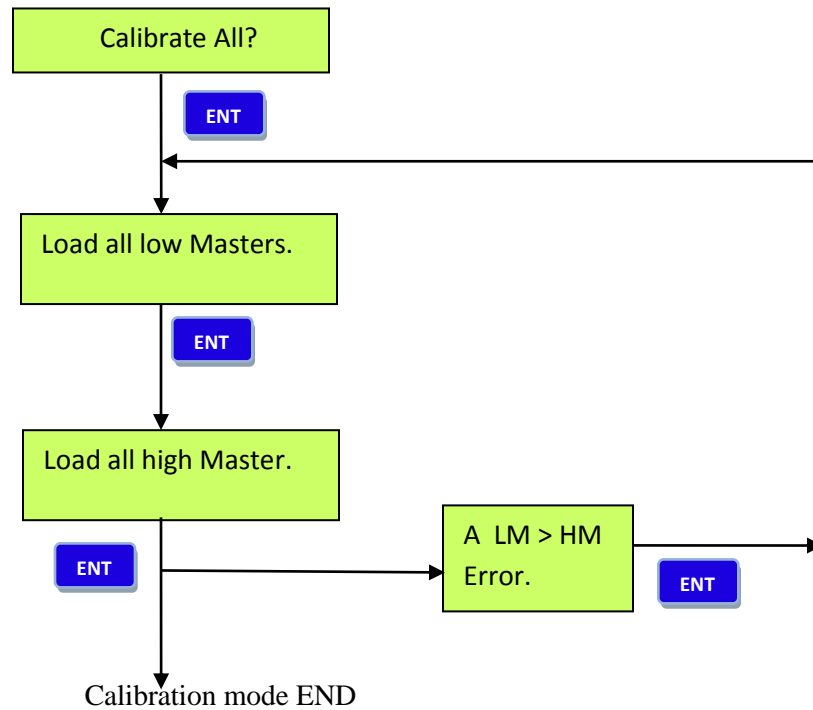




FORK MEASURING COMPANY  
Vavdi Sr.No. 17, Plot No 55B, Rani Industrial Estate  
Gondal Road, Rajkot-360002

## INSTRUCTION MANUAL FOR DIGITAL READOUT

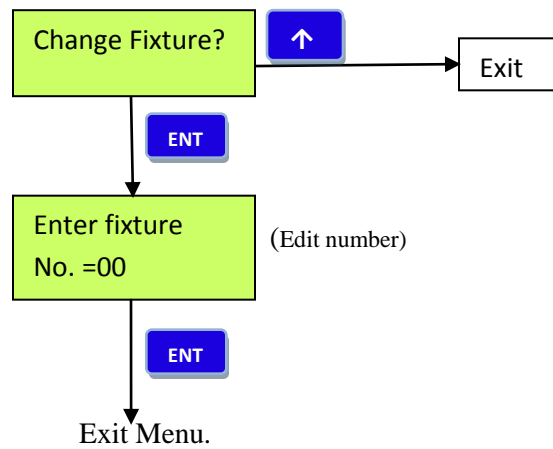
For Calibration Press :- (SET+ SHIFT)



**(Note: - A LM > HM Error. = PUT PROPER MASTERS e.g. LOW MASTERS, HM HIGH MASTERS. OR NOT SPECIFIED MASTERS)**

## INSTRUCTION MANUAL FOR DIGITAL READOUT

**For Change fixture Press: - (SHIFT+ESC)**



After selection of fixture number LCD will shows selected fixture number.

